

Meter

Quick Reference Guide

About the meter

The smart meter installed in your home records the generation from your solar PV installation.

In addition to this, the meter also records the electrical energy consumed by your home and the energy that has been exported to the electricity grid.

Using the generation, consumption and export information, the energy**note**® platform and optional Solo III display can show you this detailed information in both energy and cost.

See the separate energy**note**® and Solo III display *Quick Reference Guides* for further information.

Buttons & LEDs

The red and green LEDs on the upper section of the meter indicate that it is transmitting information to the hub.

The button on the meter is for installation use only.

FAQs

The link light (📶) on the hub is amber - is the meter working?

If the link light is amber, this means the hub is not receiving a signal from the meter. Check that the status LEDs are flashing red and green on the top of the meter and move the hub closer.

If the problem persists, contact your installer.

Reading the meter

You may be required to record the total generation from your solar PV system.

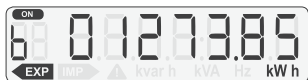
Locate the meter

The meter will typically be located near the main electricity meter for your home and close to where your fuses or trip switches are located.

Note down the reading

As shown in the example below, the meter will only show the total generation from your solar PV system in kWh (kilowatt-hours).

The figure is shown with hundredths of a kWh, so the reading in the example is 1,273.85 kWh.



EXP or IMP indicate if exporting or importing.

The generation reading on the meter is not increasing - is this right?

The reading will only increase when the meter detects generation. If you believe there has been generation from the solar PV system, contact your installer to check the meter connection.